

EDITION 4

KEYnected

CONNECTING YOU TO
THE KEY BRIDGE REBUILD



KEY
BRIDGE REBUILD
RECONNECT • REVITALIZE • REIMAGINE

INSIDE THIS EDITION



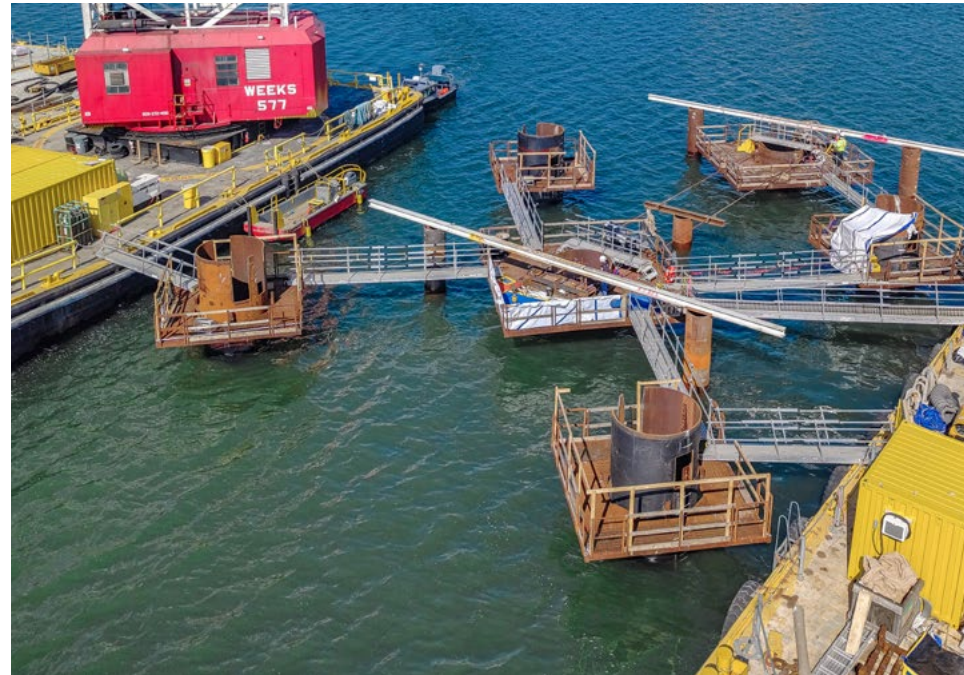
- | | |
|---|---|
| 1 Advancing the Rebuild | 7 Women in Construction Week |
| 2 Two-Year Anniversary | 7 In the Community |
| 4 KEYping it Reel
<i>The Construction Staging Area</i> | 8 Community Spotlight
<i>Little Crystal Bijoux</i> |
| 5 Bridging the Facts
<i>The Construction Staging Area</i> | 9 By the Numbers
<i>The Construction Staging Area</i> |
| 6 Faces of the Rebuild
<i>Matt Beck</i> | 10 Stay Connected |



APRIL 10, 2026 // ED. 04

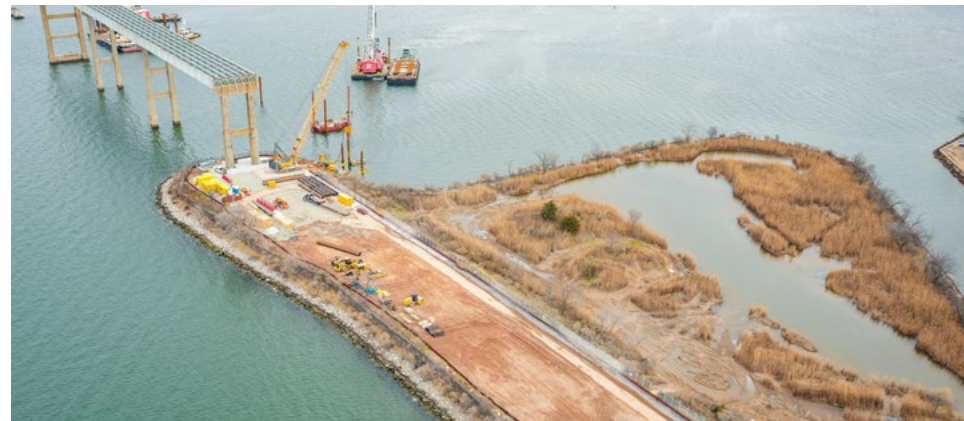
The Maryland Transportation Authority (MDTA) is rebuilding the Francis Scott Key Bridge to reconnect the I-695 Baltimore Beltway and restore a vital transportation link. The rebuild project is rooted in the needs of local communities—supporting daily life, strengthening connections, supporting the movement of people and goods across the country, and ensuring a modern bridge that will serve Marylanders for generations to come.

Advancing the Rebuild



▲ Crews preparing the lateral load test for the test pile program.

The Key Bridge Rebuild project continues to make significant progress! The Test Pile Program was successfully completed and confirmed the strength and performance of the project’s foundation design, allowing the team to progress directly into driving permanent piles. From September 2025 through February 2026, crews drove six test piles at each of the main span piers to the north and south of the federal navigation channel. They installed a load frame and jacking system to simulate the forces the piles will experience once the bridge is built. A vertical and horizontal load test were performed on the piles and both tests were successful.



▲ On-land demolition complete on the south side.

Demolition of the existing bridges over land was completed in February. Crews will remove the three bridge spans in the water on both the north and south sides later in the construction process. The spans in water do not interfere with the new construction because the new bridge alignment is approximately 260 feet east of the existing structure.

Crews started building temporary access roads for construction equipment with a combination of crushed concrete from the demolished bridge decking and new materials. Reusing available materials on site reduces waste, limits material haul-off, while creating a strong foundation for the daily movement of crews and machinery while minimizing environmental impact. The temporary construction trestle is underway on the north and south side of the bridge, with over 50 piles driven and crane mats starting to be installed. ■



▲ Building temporary access roads.

**Together
we pause to
remember the
lives impacted.**

WE HONOR:

**Dorlian Ronial Castillo Cabrera
Carlos Daniel Hernández Estrella
Alejandro Hernández Fuentes
Miguel Ángel Luna González
José Mynor López
Maynor Yasir Suazo Sandoval**



KEYping it Reel

The Construction Staging Area

The construction staging area plays a vital role in supporting the Key Bridge Rebuild, serving as the central supply hub for materials and equipment. The staging area is used to safely store, organize, and manage the equipment and resources essential for construction. The crews on the rebuild site identify what they need and coordinate with the staging area crew to quickly locate and prepare those materials, ensuring they are delivered to the site efficiently and without delay.

Allison Persing from the MDTA is bringing the Key Bridge Rebuild project to life on the Patapsco River with on-site video updates. Watch her latest video to see and hear from Matt Beck, a field engineer, who helps manage the construction staging area. ■



▲ The trucks, forklifts, and crane used to organize, and transport materials.



Bridging the Facts

The Construction Staging Area

Have questions about how the new Key Bridge is being built? You're not alone! Bridging the Facts is a Facebook series that takes you behind the scenes of the Key Bridge Rebuild Project—answering common public questions and explaining key aspects of bridge design, construction, and safety in a clear, visual format.

Each post highlights an important part of the rebuild, from major design features to innovative construction methods and environmental protection measures. ■



Bridging the Facts
Construction Staging Area



Material storage at the construction staging area

The construction staging area is the central location where materials, like the trestle steel shown below, are delivered, inspected, organized, and prepared before moving out to active work zones.



Bridging the Facts
Construction Staging Area



Organized and ready to go

From steel and lumber to tools and daily supplies, materials are sorted and stored in a nearby, accessible location. The construction staging area is like the rebuild's on-site materials store - ready to supply crews with exactly what they need, when they need it.



Bridging the Facts
Construction Staging Area



From Land to Water

Cranes load materials onto barges. Those barges then transport the supplies directly to marine crews. Barge deliveries increase project efficiency and allow work to continue safely across multiple areas of the site.



Watch my video about the construction staging area!





<https://qrco.de/bge9KH>

Faces of the Rebuild

Meet **Matt Beck**, a field engineer with experience working on a variety of infrastructure projects along the east coast. He currently serves as the Construction Staging Area engineer for Kiewit for the Key Bridge Rebuild project, where his expertise in planning, communication, logistics, and attention to details plays a critical role in ensuring the marine crews have the materials and equipment needed to rebuild the Key Bridge.

Q: What is your previous experience?

I worked as the Utility Field Engineer for Kiewit's Eastern District on the Champlain Hudson Power Express Converter Station in Queens, New York.

Q: What is your role on the Key Bridge Rebuild Project?

I am working in our approximately 22-acre construction staging area as the yard field engineer. I coordinate with all the marine and land crews to ensure they have the supplies and materials needed and maintain a stock of common provisions for each barge. I am also working with the team to make sure we have adequate office and staging area space to sustain the project.

Q: What do you like most about your job?

I really enjoy the logistical aspect of the job, and I take pride in making sure the project team receives what they need in a timely manner. Additionally, I really enjoy communicating with each crew to organize delivery schedules to make sure they have what they need.

Q: What would you want someone outside the project to know about the work being done at the construction staging area?

The area is becoming the supply house for the entire rebuild and will soon host an office space for close to 100 people. Most deliveries for the marine groups flow through the area, get loaded onto barges, and sent out to the respective crews. The area not only serves as the logistical backbone between suppliers and marine operations but also hosts five splice beds, which are used for welding the temporary trestle piles.

Thank you, Matt, for your leadership, dedication, and the positive impact you continue to have on Maryland's transportation future! ■



Women in Construction Week

The first week of March was Women in Construction week. The MDTA would like to recognize the women whose leadership, skills, and dedication help drive the Key Bridge Rebuild forward. On a project of this scale and significance, we are reminded every day that what we are building matters to this region and to the nation.

Construction has always been about building what comes next, and that progress includes expanding opportunities across the industry. There was a time when women were rarely seen on projects like the Rebuild. Women are at the forefront of engineering, operations, and management, driving the delivery of some of the nation's most complex infrastructure projects. The MDTA and Kiewit team are proud to showcase a workforce that reflects strength, expertise, and a shared commitment to building a better future.



▲ The women working on the Key Bridge Rebuild.

In the Community

The Key Bridge Rebuild team attended the Baltimore Boat Show in February, where they met with local boaters, shared updates on the rebuild, and provided important guidance on navigating safely around the project area.

The rebuild team wants to thank our dedicated firefighters at Baltimore County Fire Station 57 for their continued service and commitment to keeping our community safe. Located within the district for the Key Bridge Rebuild project, the crews shared breakfast and had the opportunity to connect, express appreciation, and recognize the vital role our first responders play every day. The MDTA is thankful for the strong partnerships and continued collaboration as this important project moves forward.



▲ Rebuild team sharing breakfast with our local Station 57 firefighters.

Want to know where we will pop up next next?

View our [Events Calendar](#) or [Sign up for updates](#) to find out where the Key Bridge Rebuild team will be next and when public meetings will be held. The calendar is continuously updated as more events are added.

Do you want to hear from the MDTA at your next community event or meeting?

Members from the Key Bridge Rebuild team are available to attend upon request—fill out the [contact form](#) to learn more information.

Community Spotlight



Little Crystal Bijoux



7 Center Pl, Dundalk, MD 21222

443-399-6246
lcbjewelers.com

Hours:
 Tues–Friday 10:00 AM – 6:00 PM
 Saturday 10:00 AM – 4:00 PM
 Sunday–Monday Closed

Opened in 2013, Little Crystal Bijoux is a boutique jewelry design studio that produces one-of-a-kind and custom jewelry. Owner and artist, Laura Quintana, always enjoyed creating art and decided to turn her skills into a full-time business in 2011. Her specialty is crafting leather jewelry pieces which start as a drawing in her sketch book. She loves to create pieces inspired by Baltimore, including the Ravens, Orioles and blue crabs. She also sells knit wear, handbags, woodwork, prints, candles, and bath and body products created by her father and husband.

Are you a small business, retail store, or restaurant near the Key Bridge Rebuild and want to be featured in a future spotlight? Contact us through KeyBridgeRebuild.com!

Watch Allison Persing's behind the scenes interview with Crystal and Jen to learn more!



<https://qrco.de/bgiNDx>

By the Numbers

The Construction Staging Area

The construction staging area serves as a critical logistics hub, receiving, staging and preparing materials that are needed for installation.



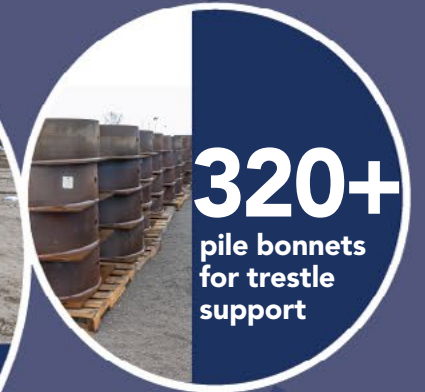
125+
 trestle piles
 spliced on site



A crawler crane with a
184 ft
 boom, used to load
 and stage materials



130+ stringer packs
 for trestle
 support



320+
 pile bonnets
 for trestle
 support



350+
 crane mats for
 trestle roadway



80+
 cap beams
 for trestle
 support

A forklift with
40,000 lb
 capacity used to move the materials





KEY
BRIDGE REBUILD
RECONNECT • REVITALIZE • REIMAGINE



Stay Connected

The MDTA is committed to keeping local communities and stakeholders informed every step of the way. Go to our website to join the mailing list and subscribe to text alerts for project updates and events.



WEBSITE
KeyBridgeRebuild.com



E-MAIL
Info@KeyBridgeRebuild.com



PHONE
800-515-7030



FACEBOOK
[@KeyBridgeRebuild](https://www.facebook.com/KeyBridgeRebuild)